



**BREAKER
TECHNOLOGY,
INC.**

an Astec company

SH SERIES Hydraulic Shears

BTI's SH Series of Hydraulic Shears provides a powerful and efficient means to cut steel beams and rebar, crush concrete, as well as pick up and sort materials. Useful in scrap yards and demolition sites, the SH Series is among the most versatile shears available.

Features & Benefits

Long Life and Reliability

Constructed of high grade steel, structure is designed with maximum strength and reliability for a long service life.

Easy and Accurate Positioning

Designed with a full 360 degree hydraulic rotation with cross over protection valve to protect the motor and components from external forces.

Maximum Productivity

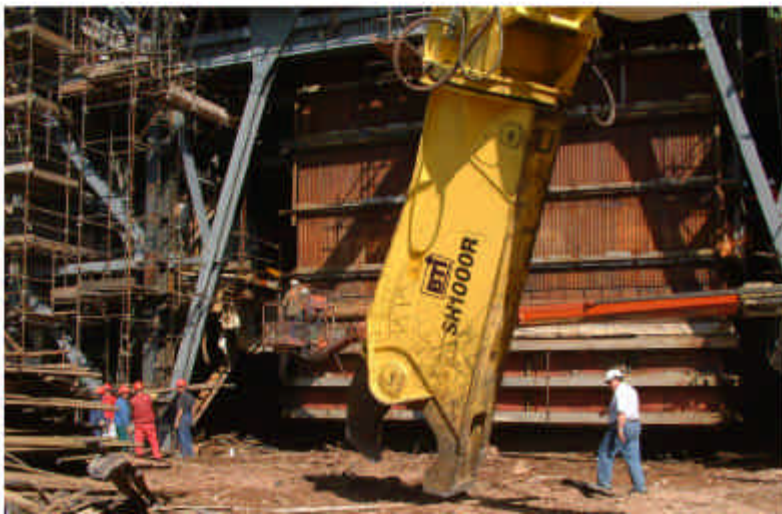
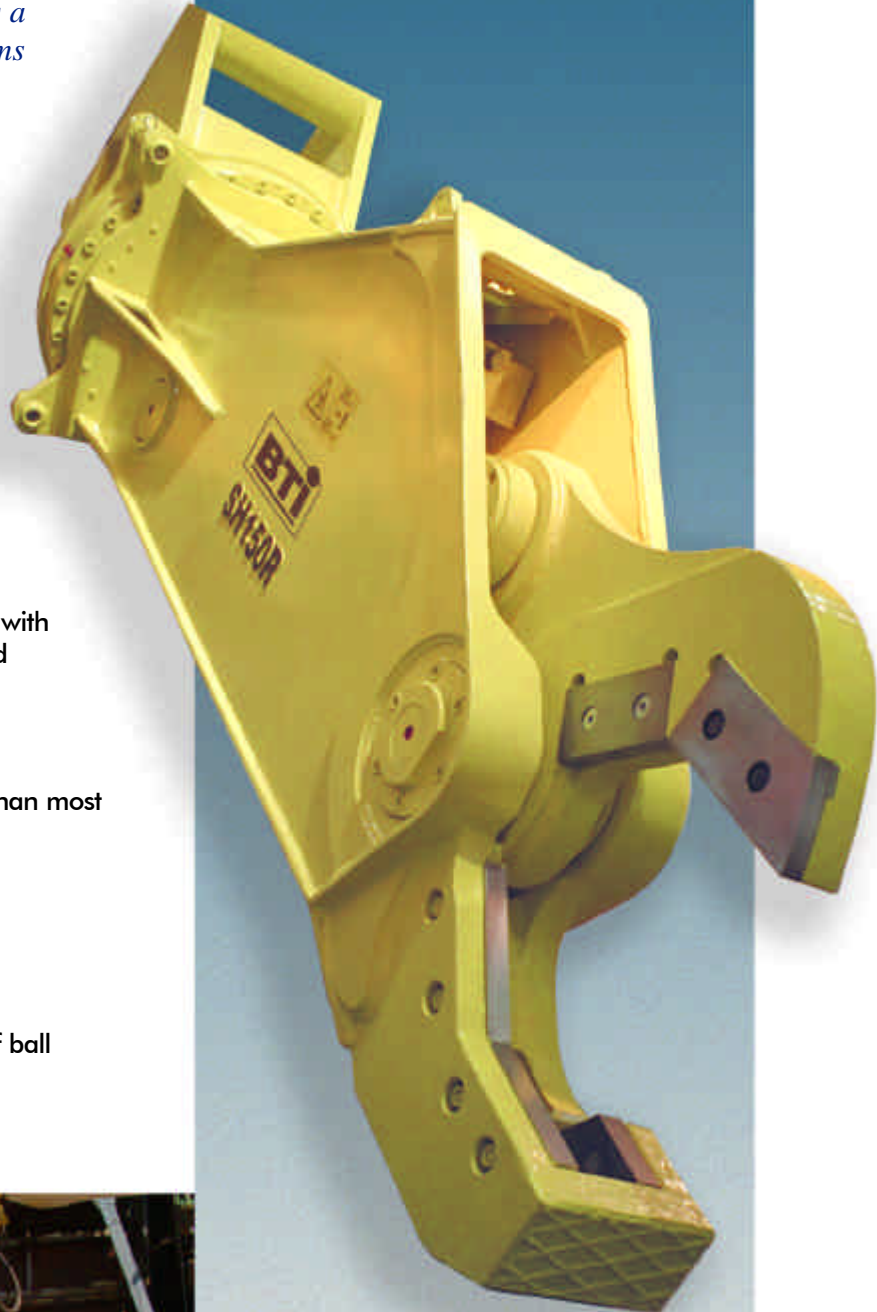
A unique speed valve provides a faster cycle time than most competitors.

Low Maintenance

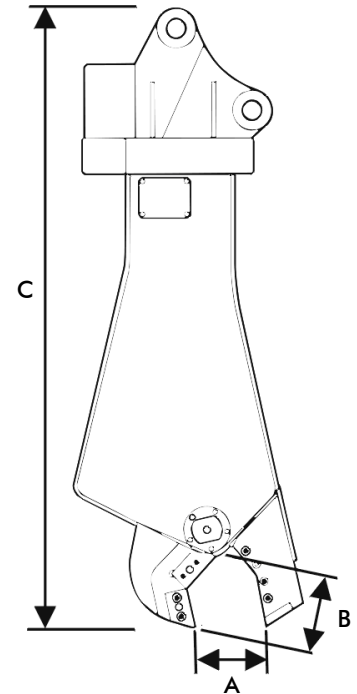
All wearing parts are replaceable.

Heavy Duty Rotation Bearing

A large diameter rotation bearing utilizes 2 rows of ball bearings giving maximum durability.

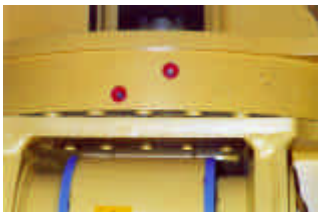


SH Series Hydraulic Shears

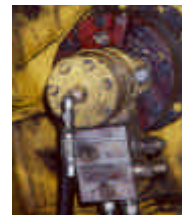


General Specifications	Units	SH150R	SH300R	SH400R	SH1000R
Recommended Carrier Weight - 2nd member - 3rd member	tonne	10-15	18-25	24-32	75-85
	tonne	15-20	28-35	38-45	110-150
Approximate Shear Weight	lbs	3,300	6,220	8,590	25,350
	kg	1,500	2,827	3,905	11,500
Working Pressure	psi	5,000	5,000	5,000	5,000
	bar	350	350	350	350
Oil Flow Required	gpm	40-53	53-66	66-80	150-200
	l/min	150-200	200-250	250-300	570-760
Opening (A)	in	16.5	22	30	41.5
	mm	420	558	760	1,055
Throat to Tip (B)	in	17	21	26	40.9
	mm	440	520	660	1,049
Reach (C)	in	112	134	150	195
	mm	2,850	3,400	3,800	4,950
Cutting Force (Primary Blade Center)	tons	128	195	310	610
Open/Close Speed	seconds	1.6 / 1.8	2.8 / 2.7	3.6 / 3.5	5.0 / 3.5

All dimensions and specifications are approximate and subject to change without notice.



A heavy duty bearing using a double row of balls provides a longer service life than the typical single row.



Rather than relying on the carrier's relief valve, a motor protection valve is incorporated protecting the motor and gear box from external forces, ensuring a long service life on all rotation components.

Authorized Dealer



www.rockbreaker.com

Breaker Technology, Inc.

Western US & Mexico
3464 Durahart Street
Riverside, CA 92507
Tel: (909) 369-0878
Fax: (909) 369-8281

Eastern US
30625 Solon Industrial Pkwy
Solon, OH 44139
Tel: (440) 248-7168
Fax: (440) 248-8645

Breaker Technology Ltd.

Canada & International
35 Elgin Street North
Thornbury, Ontario N0H 2P0
Tel: (519) 599-2015
Fax: (519) 599-6803

